

CARDIOPULMONARY



**THE LOWEST PRIME
ADULT OXYGENATOR**

KOMPASS



EUROSETS
EVERY LIFE MATTERS



KOMPASS THE LOWEST PRIME ADULT OXYGENATOR

Dilutional anaemia and coagulopathy have long been negatively linked to the conduct of cardiopulmonary bypass (CPB).¹ Scientific literature has demonstrated that complications such as Stroke, myocardial infarction, low cardiac output, cardiac arrest, renal failure, prolonged ventilation, pulmonary edema, reoperation due to bleeding and multiorgan failure, were all significantly and systematically increased as lowest haematocrit values decreased below 22%.²

Larger prime volumes result in lower haemoglobin (Hgb) peak levels, which have been associated with increased in-hospital stay and long-term mortality, increased troponin release, longer mechanical ventilation times, and decreased estimated glomerular filtration rates.³⁻⁴

KOMPASS is specially designed to have the lowest priming volume (Fig. A) with low contact surface area, combining excellent gas transfer performances with clinical flexibility for small adult and adult Patients.

OPTIMAL ERGONOMIC DESIGN FOR PERFUSION COMFORT.

Improved ease of use thanks to the top venous inlet port and a large variety of connector adapters for enhanced customization capabilities.

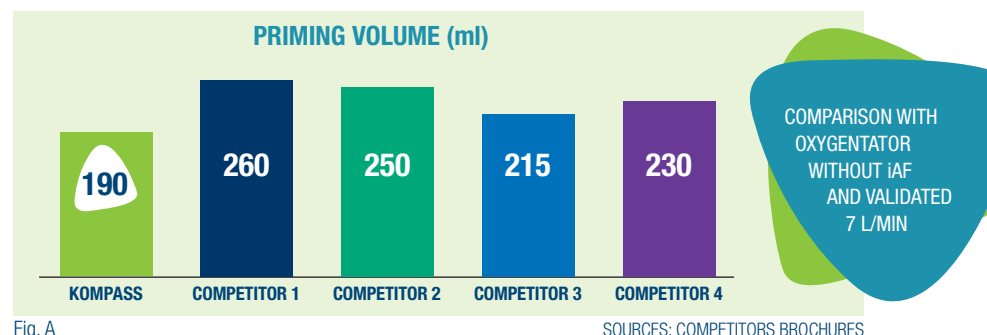


Fig. A

SOURCES: COMPETITORS BROCHURES

SINGLE CHAMBER RESERVOIR

MAIN FEATURES

- 4500 ml total reservoir capacity
- 3 different filtration systems:
 - Venous inlet (80µm)
 - Sucker Port 1 (40µm)
 - Sucker Port 2 (40µm)
- Suitable for VAVD

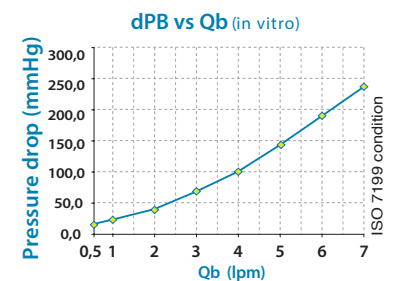
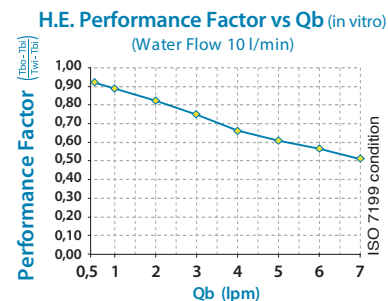
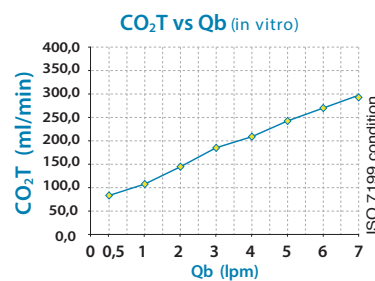
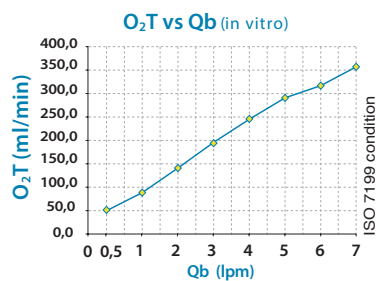
CONNECTIONS

- Venous inlet, 360° rotatable 1/2"
- Venous reservoir outlet 3/8"
- Vented/vacuum Port 1/4"
- 4 filtered Ports 1/4"
- 2 filtered Ports 3/8"
- 2 filtered luer lock Ports
- 2 filtered post lock - luer lock
- 1 non filtered luer lock

OXYGENATOR MODULE

TECHNICAL CHARACTERISTICS

| | |
|------------------------------|----------------------------|
| Priming volume: | 190 ml |
| Contact surface area: | 1,35 m ² |
| Max blood flow rate: | 7,0 l/min |
| Heat Exchanger surface area: | 0.08 m ² |
| H.E. Performance Factor: | $\eta = 0.64$ (at 4 l/min) |
| Coating: | PC phosphorylcholine |



ISO 7199 condition
Bovine blood
Hb = 12 ± 1 g/dL

SV02 = 65 ± 5%
PVC02 = 45 ± 5 mmHg

B.E. = 0 ± 5 mEq/L
Temp = 37 ± 1°C

Qb/Qg = 1
FI02 = 100%



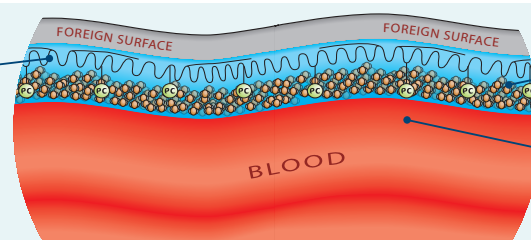
PHOSPHORYLCHOLINE COATING

Phosphorylcholine or PC is the predominant lipid headgroup found within the outer layer of cell membranes.

PC has a natural affinity for water and binds water tightly around itself.

As a result, the outer layer of the cell membrane does not promote clot formation (thrombosis).

ALKALINE CHAINS SPREAD
ACROSS THE SURFACE YIELDING
A STABLE COATING THROUGH
HYDROPHOBIC INTERACTIONS



LAYER OF HYDRATION AROUND PC
- WITH A COATED SUBSTRATE
THE BLOOD THEREFORE "SEES"
A LAYER OF WATER

ZWITTERIONIC PC GROUPS EXPRESSED
OUTWARDS FROM THE SURFACE



| CODE | DESCRIPTION | N°/PACK |
|--------|--|---------|
| EU5100 | Kompass Alone | 1 |
| EU2331 | Holder for Oxygenator adult/pediatric | 1 |
| EU2489 | Holder for Oxygenator adult light | 1 |
| EU2490 | Holder for Oxygenator adult adjustable | 1 |

REFERENCES

1. Ranucci M, Pazzaglia A, Bianchini C, Bozzetti G, Isgro G. **Body size, gender, and transfusions as determinants of outcome after coronary operations.** Ann Thorac Surg. 2008;85:481–6.
2. Habib RH et Al. **Adverse effect of low hematocrit during CPB in the adult:should current practice be changed?** JThoracCardiovascSurg 2003 Jun; 125(6):1438-50
3. Loor G, Li L, Sabik JF 3rd, Rajeswaran J, Blackstone EH, Koch CG. **Nadir hematocrit during cardiopulmonary bypass: End-organ dysfunction and mortality.** J Thorac Cardiovasc Surg. 2012;144:654–62
4. Fang WC, Helm RE, Krieger KH, et al. **Impact of minimum haematocrit during cardiopulmonary bypass on mortality in patients undergoing coronary artery surgery.** Circulation. 1997;96:II-194–9

EUROSETS EUROPE

ITALY
Eurosets S.r.l.
Strada Statale 12, 143
41036 Medolla (MO)
Italy
Ph: +39 0535 660311
Fax: +39 0535 51248
info@eurosets.com

BENELUX
Eurosets Benelux
Winstar Park,
Rue Provinciale, 62
1301 Bierges (Wavre)
Belgium
Ph: +32 10237993
info.nl@eurosets.com
info.be@eurosets.com

FRANCE
Eurosets France Sarl
Immeuble LE FONTENOY
96, Boulevard Vivier
Merle
69423 LYON Cedex 03
Ph: +33 962191542
Fax: +33 970066573
info.fr@eurosets.com

GERMANY
Eurosets GmbH
Industriestr. 29
82194 Gröbenzell
Ph: +49 81426671227
Fax: +4981426671229
info.de@eurosets.com

EUROSETS ASIA

CHINA
Eurosets (Suzhou) Medical Device Ltd.
Suite 1308-2, The Summit (South Block)
No. 119, Suzhou Avenue West,
Suzhou Industrial Park - 215000, Greater China.
苏州工业园区苏州大道西119
号苏悦广场南楼1308-2, 215000,
更大的中国
info.cn@eurosets.com

eurosets.com

Prodotto da
Manufactured by
Fabriqué par
Hersteller
Fabricado por

Eurosets s.r.l.
Strada Statale 12, n°143
41036 Medolla (MO) Italy
Tel: +39 0535 660311
Fax: +39 0535 51248
E-mail: info@eurosets.com
eurosets.com

STERILE

Latex free

Distribuito da
Distributed by
Distribuë par
Vertrieb
Distribuido por